



## 2820-061 Internal Bond Fixture for Wood

### Features

- 10 kN (1000 kgf, 2250 lbf) force capacity
- Self-aligning upper grip ensures uniform lateral distribution of applied load
- Rotatable lower grip ensures ease of specimen loading and minimises torsional misalignment
- Ideal for tests on chipboard, fiberboard etc.
- Compliant with ASTM, BS, and JIS standards

### Description

The 2820-061 internal bond fixture is designed for testing the strength properties of wood or adhesive bonds in wood by tensile loading.

The fixture consists of a self-aligning upper grip and a rotatable lower grip. Tensile loading is applied to the specimen via blocks bonded to the specimen itself. Simple clevis pin interfaces are used which allow quick and easy fitting and removal of the grips

### Principle of Operation

The upper grip contains an integral self-aligning connection which ensures uniform distribution of the tensile load. A rotatable lower grip makes loading the specimen easy and minimises any torsional misalignment. Each grip has shoulders which locate into slots in the blocks which are bonded to the specimen.

The specimen, complete with two bonded blocks, is simply inserted into the grips and a tensile test performed.

### Application Range

- Static tensile tests on a wide range of wood and timber specimens and adhesive bonds at ambient temperatures
- Type of Loading: Static tensile. Not suitable for high cycle dynamic fatigue tests
- Specimen shapes: Rectangular



▲ 2820-061 Internal bond fixture

# 2820-061

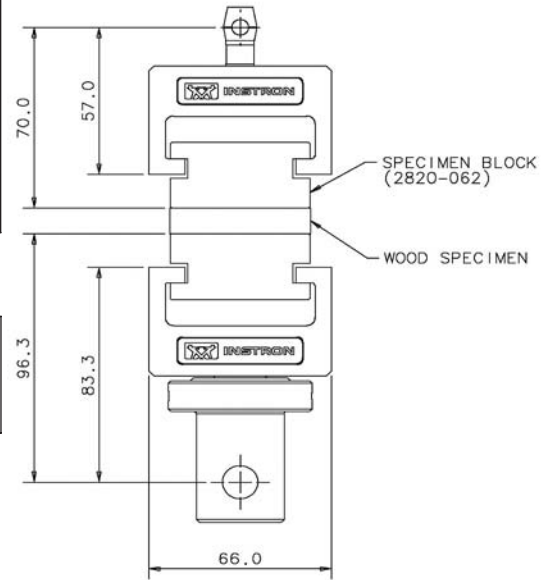
## Internal Bond Fixture for Wood

### Specifications

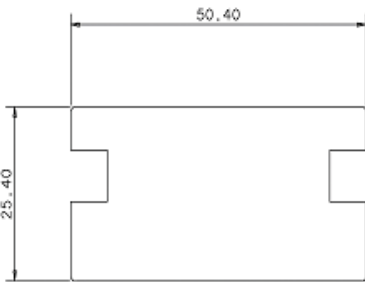
<b>Catalog Number</b>	<b>2820-061</b>
<b>Compliance to Standards</b>	ASTM D1037-99, BS5669-1979, JIS A5905-1994, JIS A5906-1993, JIS A5908-1994
<b>Upper Fitting</b>	6 mm clevis (Type Om) swivel
<b>Lower Fitting</b>	0.5 in clevis (Type Dm)
<b>Weight- Upper</b>	0.65 kg (1.4 lb)
<b>Weight- Lower</b>	1.1 kg (2.4 lb)

### Items for Use with 2820-060

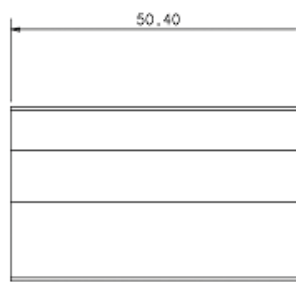
<b>Catalog Number</b>	<b>2820-062</b>
<b>Description</b>	Specimen blocks (Steel). Set of 20
<b>Weight (Per block)</b>	0.47 kg



▲ 2820-061 internal bond test fixture  
(Dimensions in mm)



▲ 2820-062 Specimen blocks (Dimensions in mm)



#### Corporate Headquarters

Instron Corporation  
825 University Avenue, Norwood, MA 02062-2643 USA  
Tel: +1 800 564 8378 or +1 781 575 5000 Fax: +1 781 575 5725

#### Instron Industrial Products

900 Liberty Street, Grove City, PA 16127-9969, USA  
Tel: +1 724 458 9610 Fax: +1 724 478 9614

#### European Headquarters

Instron  
Coronation Road, High Wycombe, Bucks HP12 3SY, United Kingdom  
Tel: +44 1494 464646 Fax: +44 1494 456123

#### www.instron.com

Instron is a registered trademark of Instron Corporation. Other names, logos, icons, and marks identifying Instron products and services referenced herein are trademarks of Instron Corporation and may not be used without the prior written permission of Instron. Other product and company names listed are trademarks or trade names of their respective companies.

Copyright © Instron 2007. All rights reserved.  
All of the specifications shown in this brochure are subject to change without notice.